

## JIS GROUP EDUCATIONAL INITIATIVES

In a world where education plays an unquestionably cardinal role in empowering individuals, the remarkable journey undertaken by the illustrious JIS Group, shines with resplendence. Over the span of 25 years, the erudite visionaries of the JIS Group has flourished to encompass an awe-inspiring array of 39 institutions, diligently serving a student population exceeding 45,000, offering 185 programmes. Sardar Jodh Singh, with his indomitable spirit and exceptional entrepreneurial acumen, has ventured into various sectors such as dairy, transport, infrastructure, iron & steel, cargo, logistics, information technology, agro, overseas ventures, movies, and much more. However, his pioneering efforts in the field of education are truly commendable and have garnered global recognition. Currently, the JIS Group oversees the best educational institutions in West Bengal, comprising 39 institutes, offering 185 programs, and catering to over 45,000 students pursuing diverse academic courses.

The largest educational conglomerate of Eastern India has been offering a diverse range of undergraduate and postgraduate programs spanning disciplines such as Engineering & Technology, Agriculture, Medical Science, Dental Science, Pharmacy, Hospitality, Law, Education, and Business Management. Accredited by esteemed government bodies like UGC, AICTE, NAAC, NIRF, NBA, PCI, BCI, DCI, MCI, NCHMCT, and affiliated with MAKAUT and WBSCCTVED, the JIS Group is dedicated to serving society as a torchbearer of knowledge, education, and employment opportunities. Through conscious and continuous efforts, the JIS Group has emerged as one of India's largest educational conglomerates, boasting a rich legacy spanning over 25 years. With collaborations with over 550 industries, 15 chambers, 73 universities, and 22 countries, the group strives to spread its educational excellence on a global scale.

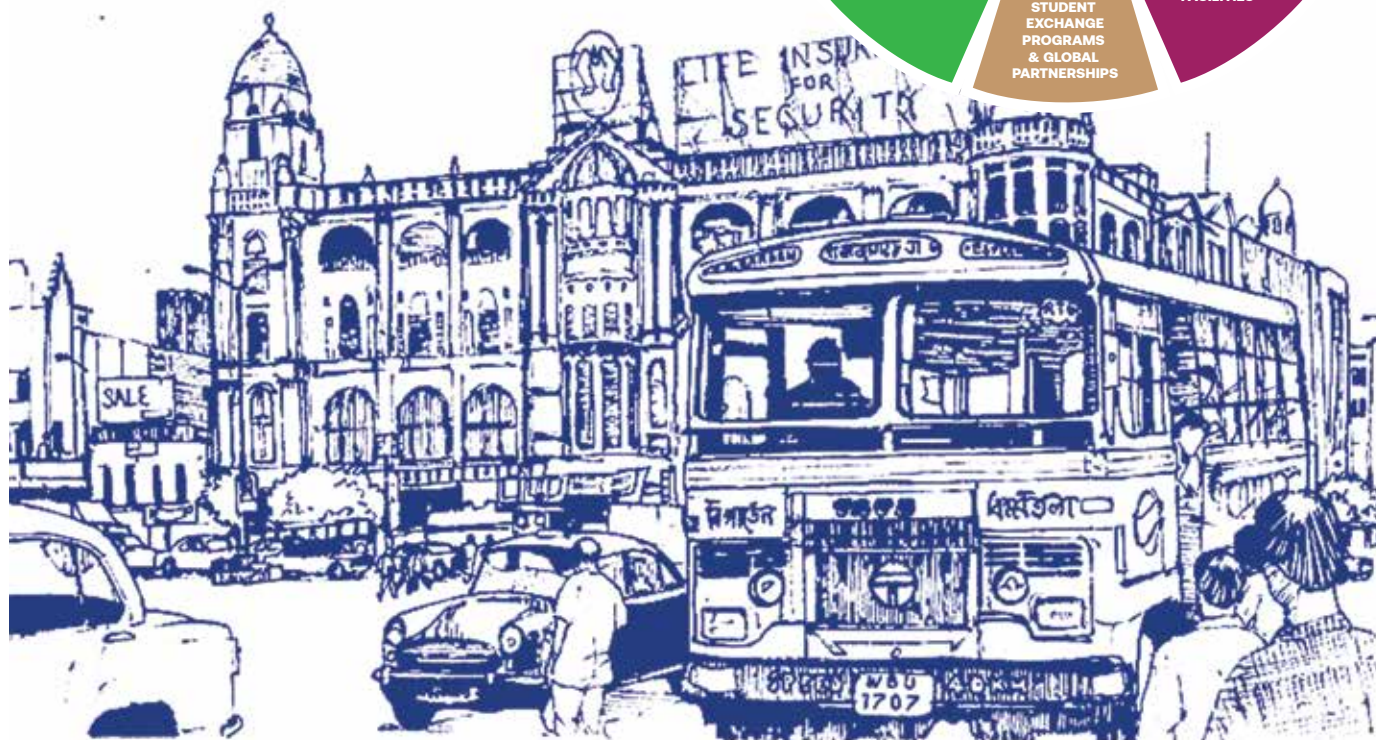
### MISSION

To advance and enhance the learning possibilities by fostering awareness, developing holistic knowledge acquisition through discovery, innovation, exposure and interaction to build effective human talents



### VISION

Leading and inspiring knowledge & excellence in the society across the globe



## JIS DISTINCTIONS

NIT, GNIPST, JISCE, GNIT, AEC & SURTECH HAVE RECEIVED NIRF INNOVATION RANKING 2023

550+ STUDENTS RECEIVED AWARDS IN NATIONAL AND INTERNATIONAL LEVEL

GNIDSR IS THE ONLY NAAC "A" ACCREDITED DENTAL COLLEGE IN WEST BENGAL WHICH ALSO RECEIVED NIRF RANKING IN 2022

JIS UNIVERSITY HAS RECEIVED AA+ RATING IN THE CAREERS360 INDIA'S BEST LAW COLLEGES IN 2023

SURTECH RECEIVED AAA RANK IN THE CAREERS360 BEST ENGINEERING COLLEGE, EAST ZONE

JIS GROUP LAUNCHES ITS STATE-OF-THE-ART JIS DRONE ACADEMY, OFFERING EXCITING COURSES IN DRONE TECHNOLOGY FOR THE VERY FIRST TIME AT SURTECH CAMPUS

NEW18 BANGLA JIS GROUP RECEIVED THE EDUCATION EMINENCE AWARD 2023

NIT HAS ESTABLISHED COE IN COLLABORATION WITH BOSCH AND FOCUSED ON DEVELOPING THE SKILLS OF CORE ENGINEERS IN AUTOMATION OF PNEUMATIC AND HYDRAULIC SYSTEMS

PARAM SEVAK, SUPER COMPUTER, HAS BEEN INSTALLED IN JIS UNIVERSITY

450+ BOOKS PUBLISHED

312+ ON-GOING RESEARCH PROJECTS

RESEARCH GRANTS AMOUNT TO ₹16 CRORES



GNIT IS THE 1ST PRIVATE ENGINEERING COLLEGE IN WEST BENGAL TO RECEIVE NAAC GRADE 'A+' ACCREDITATION IN 2022

NIT, JISCE & AEC HAVE RECEIVED NAAC GRADE 'A' ACCREDITATION IN 2022

FLIPPED LEARNING METHODOLOGY HAS BEEN INTRODUCED IN JISCE

GNIDSR IS THE 1ST PRIVATE DENTAL COLLEGE OF WEST BENGAL RECOGNISED BY MINISTRY OF HEALTH & FAMILY WELFARE, GOVT OF INDIA & DENTAL COUNCIL OF INDIA

A STATE-OF-THE-ART DIGITAL STUDIO HAS BEEN LAUNCHED AT THE JIS COLLEGE OF ENGINEERING & GURU NANAK INSTITUTE OF TECHNOLOGY

272 SPECIALIZED DEPARTMENTAL LABORATORIES & LIBRARIES COMPRISING OF 4.70 LAKH BOOKS

JISCE, NIT & GNIT HAVE RECEIVED 5 STAR RATINGS FROM THE INSTITUTION INNOVATION COUNCIL. SURTECH HAS RECEIVED 4 STAR RATINGS FROM THE INSTITUTION INNOVATION COUNCIL

DEPARTMENT OF FOOD TECHNOLOGY (GNIT) HAS BEEN AWARDED 6 YEARS OF PRESTIGIOUS ACCREDITATION BY NBA

IDEA LAB THE JIS IDEA LAB AICTE FUNDED EMPOWERS STUDENTS WITH CUTTING-EDGE FACILITIES LIKE 3D PRINTERS, LASER CUTTERS, ELECTRONICS KITS TO TRANSFORM THEIR IDEAS INTO TANGIBLE CREATIONS

AICTE LAB GRANT JISCE RECEIVED NEARLY 1 CRORE FOR RESEARCH & INNOVATION

IDEA-O-METER

JIS EDUCATION IPO



## STRATEGIC TIE-UPS

The JIS Group signed a MOU at the 'Bengal Global Business Summit' between the Department of Health & Family Welfare, Govt. of West Bengal, and JIS University on 21.04.2022, to establish the JIS School of Medical Science and Research, at Santaragachi, Howrah West Bengal

Asian Institute of Technology (AIT), Bangkok, to promote and reinforce cooperation towards Teaching, Training and Research

Tata Technologies to provide industry-oriented skill sets to our students

JIS Indo-Russian 'Center of Excellence' Started at JIS College of Engineering

IT-ITeS Sector Skills Council NASSCOM to launch 'Employability Enhancement Programmes' for the students

IIT- Kharagpur and IIST-Shibpur to conduct advanced interdisciplinary research in contemporary fields of oral healthcare with GNIDSR

National Institute of Technology, Sikkim, to facilitate advanced exploration in areas of Academics, Research and Consultancy

JIS College of Engineering has been chosen as one of the nodal centres to facilitate Training and Placement Services

IBM for enhancement of Research and Technical Education

Guru Nanak Institute of Hotel Management (GNIHM) signed a Historic MoU with THE RITZ-CARLTON (A Marriott Luxury brand) Bangalore for cooperation on internships, placements, and faculty development

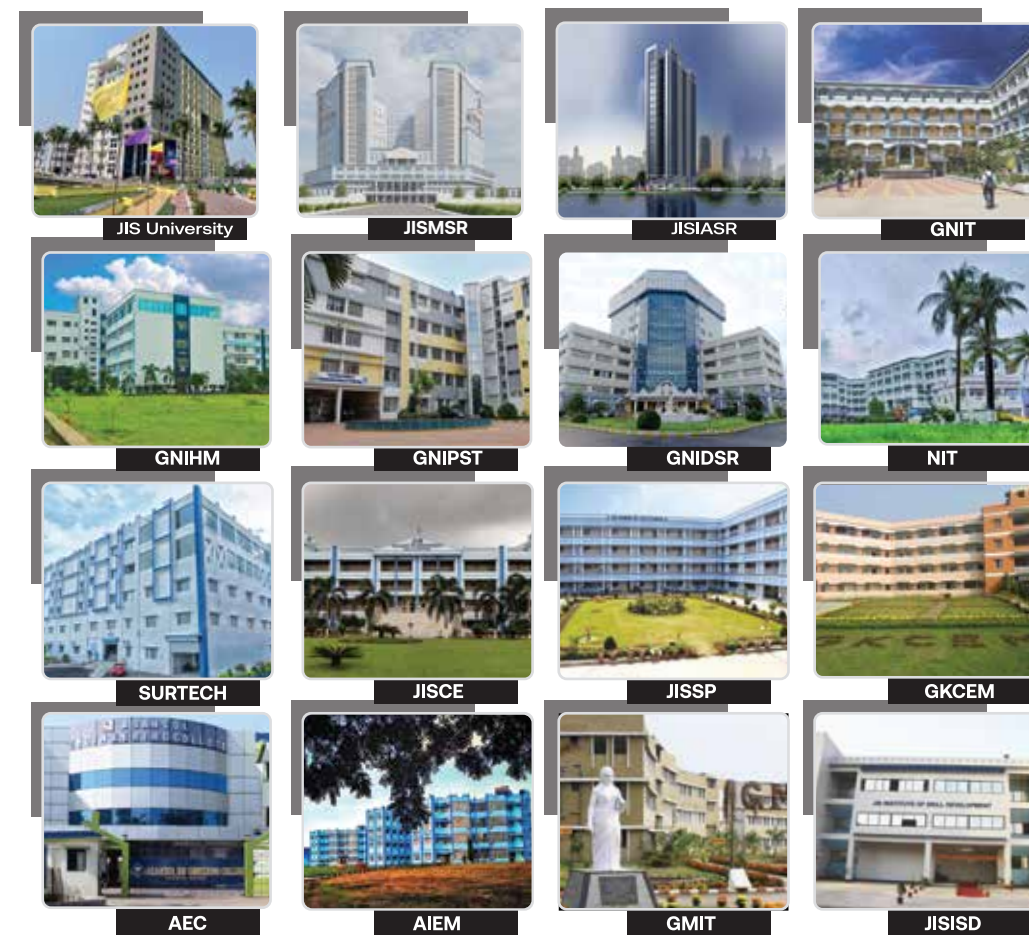
Infosys for its Campus Connect Programme to enhance understanding of industry requirements

International Mobility Programme with IMU Malaysia and GNIDSR

Hyundai India Motor Limited and Volkswagen tie-up at SurTech

## JIS GROUP EDUCATIONAL INITIATIVES #EDUCATIONBEYONDDORDINARY

39 INSTITUTIONS | 185 PROGRAMMES | 45000+ STUDENTS



& Others

## RANKINGS & AWARDS



## ADMISSION UNDER PIO, FOREIGN NATIONAL & GULF QUOTA

Admission under supernumerary quota for Persons of Indian Origin (PIO) / Foreign Nationals (FN) / Children of Indians / Workers in Gulf Countries for the following institutes :

1. JIS COLLEGE OF ENGINEERING (JISCE)
2. NARULA INSTITUTE OF TECHNOLOGY (NIT)
3. GURU NANAK INSTITUTE OF TECHNOLOGY (GNIT)
4. JIS UNIVERSITY (JISU) (PRIVATE UNIVERSITY UNDER JIS GROUP)
5. GURU NANAK INSTITUTE OF PHARMACEUTICAL SCIENCE & TECHNOLOGY (GNIPST)
6. GURU NANAK INSTITUTE OF HOTEL MANAGEMENT (GNIHM)
7. JIS INSTITUTE OF ADVANCED STUDIES & RESEARCH (JISIASR)

### PROGRAMMES OFFERED

B.Tech | B.Pharm | BMLT | BBA | MBA BHM | B.Sc (H) in : Biochemistry, Microbiology, Biotechnology, Geology, Agricultural Science  
M.Sc in: Biochemistry, Microbiology, Biotechnology, Remote Sensing & GIS, Physics  
BCA | LLB | B.Ed | BA in International Hospitality & Hotel Administration | BA in International Culinary Arts | B.Sc in Hospitality and Hotel Administration | MBA in Hospitality & Hotel Administration | Diploma in Hotel Operations | Diploma in Food Production & Bakery | Diploma In Food & Beverage Service | Diploma in Accommodation Operations

Undergraduate disciplines - Candidates must qualify 10+2 or equivalent examination from a recognised University / Board / Council with minimum 60% marks.

Postgraduate disciplines - Candidates should be a graduate in relevant discipline from a recognised University.



BASED ON MARKS SCORED IN THE LAST EXAMINATION AND OTHER CRITERIAS AS SPECIFIED BY THE INSTITUTES

### HOW TO APPLY

- Attested documents to be attached with the application form -
- a. Valid passport
  - b. Five recent passport size photographs
  - c. 10+2 or equivalent examination marksheets or graduation marksheets if applicable
  - d. Admit card of class 10
  - e. Marks equivalent to Grade Certificate issued by the Authority (if applicable)
  - f. NOC from National Govt. for studying in India
  - g. Student visa
  - h. Complete application form with signature of applicant

### ACCOMMODATION FACILITIES

All the JIS Institutions provide comfortable and secured accommodation facilities for boys and girls separately. Both AC and Non-AC rooms are available. The campus is Wi-Fi enabled.

An assortment of stimulating indoor games available in the hostel along with a spacious playground outside the hostel building keeping the students engaged in their idle time. The hostel students can optimally use the gym and centralized library amenities to their advantage.

### CONTACT US

Corporate Office: Dwarka Building | 7 Sarat Bose Road | 1st Floor | Kolkata - 700020 | W.B.  
W: www.jisgroup.org | Helpline: 90733 70470 / 93309 06153

f @ in

University Address: 81 Nilgunj Road | Agarpara | Kolkata-700 109 | W.B.  
P: 86977 43361 / 86977 43362 | W: www.jisuniversity.ac.in

f @ in



## JIS COLLEGE OF ENGINEERING (JISCE)

### PROGRAMMES OFFERED

- B.TECH**
- ➔ AGRICULTURAL ENGINEERING
  - ➔ BIO MEDICAL ENGINEERING
  - ➔ CIVIL ENGINEERING
  - ➔ COMPUTER SCIENCE & ENGINEERING
  - ➔ COMPUTER SCIENCE & TECHNOLOGY
  - ➔ COMPUTER SCIENCE & ENGINEERING (AI-ML)
  - ➔ ELECTRICAL ENGINEERING
  - ➔ ELECTRONICS & COMMUNICATION ENGINEERING
  - ➔ INFORMATION TECHNOLOGY
  - ➔ MECHANICAL ENGINEERING

### M.TECH

- ➔ COMPUTER SCIENCE & ENGINEERING
- ➔ ELECTRICAL DEVICES & POWER SYSTEM
- ➔ MOBILE COMMUNICATION & NETWORKING TECHNOLOGY
- ➔ MECHANICAL ENGINEERING

### MBA

- ➔ MASTER OF BUSINESS ADMINISTRATION

### MCA

- ➔ MASTER OF COMPUTER APPLICATION

### BBA

- ➔ BACHELOR OF BUSINESS ADMINISTRATION
- ➔ DIGITAL MARKETING
- ➔ HOSPITAL MANAGEMENT

### BCA

- ➔ BACHELOR OF COMPUTER APPLICATION

### DIPLOMA

- ➔ ELECTRICAL ENGINEERING
- ➔ MECHANICAL ENGINEERING

Block A, Phase III, Kalyani, Nadia - 741235 West Bengal  
E: admission.jisce@jisgroup.org | W: www.jiscollege.ac.in  
For further information call: 86977 43363 / 943201 1490

## NARULA INSTITUTE OF TECHNOLOGY (NIT)

### PROGRAMMES OFFERED

- B.TECH**
- ➔ ELECTRONICS & COMMUNICATION ENGINEERING
  - ➔ COMPUTER SCIENCE & ENGINEERING
  - ➔ COMPUTER SCIENCE & ENGINEERING (DATA SCIENCE)
  - ➔ CIVIL ENGINEERING
  - ➔ ELECTRICAL ENGINEERING
  - ➔ MECHANICAL ENGINEERING
  - ➔ INFORMATION TECHNOLOGY
  - ➔ ELECTRONICS & COMPUTER SCIENCE
  - ➔ COMPUTER SCIENCE & TECHNOLOGY
  - ➔ COMPUTER SCIENCE (AI & MACHINE LEARNING)
  - ➔ COMPUTER SCIENCE & BUSINESS SYSTEM

### M.TECH

- ➔ COMPUTER SCIENCE & ENGINEERING
- ➔ ELECTRONICS & COMMUNICATION ENGINEERING
- ➔ POWER SYSTEMS
- ➔ STRUCTURAL ENGINEERING
- ➔ GEOTECHNICAL ENGINEERING

### MANAGEMENT

- ➔ BACHELOR OF BUSINESS ADMINISTRATION
- ➔ BBA IN HOSPITAL MANAGEMENT

### COMPUTER APPLICATION

- ➔ MASTER OF COMPUTER APPLICATION
- ➔ BACHELOR OF COMPUTER APPLICATION

### DIPLOMA

- ➔ CIVIL ENGINEERING
- ➔ ELECTRICAL ENGINEERING
- ➔ ELECTRONICS & COMMUNICATION
- ➔ MECHANICAL ENGINEERING

### VOCATIONAL

- ➔ BVOC - GRAPHICS & MULTIMEDIA SOFTWARE DEVELOPMENT
- ➔ DVOC - ELECTRONIC MANUFACTURING SERVICES

81, Nilgunj Road, Agarpara, Kolkata - 700 109, West Bengal  
E: admission@nit.ac.in | W: www.nit.ac.in  
For further information call: 89024 96651 / 62919 77702

## GURU NANAK INSTITUTE OF TECHNOLOGY (GNIT)

### PROGRAMMES OFFERED

- B.TECH**
- ➔ ELECTRONICS & COMMUNICATION ENGINEERING
  - ➔ ELECTRONICS & COMPUTER SCIENCE ENGINEERING
  - ➔ COMPUTER SCIENCE & ENGINEERING
  - ➔ ARTIFICIAL INTELLIGENCE & MACHINE LEARNING
  - ➔ COMPUTER SCIENCE & ENGINEERING (CYBER SECURITY)
  - ➔ ELECTRONICS ENGINEERING
  - ➔ INFORMATION TECHNOLOGY
  - ➔ FOOD TECHNOLOGY

### M.TECH

- ➔ ELECTRONICS & COMMUNICATION ENGINEERING
- ➔ COMPUTER SCIENCE & ENGINEERING
- ➔ FOOD TECHNOLOGY

### MANAGEMENT

- ➔ BACHELOR OF BUSINESS ADMINISTRATION (BBA)
- ➔ BBA IN HOSPITAL MANAGEMENT

### SCIENCE

- ➔ B.SC DATA SCIENCE
- ➔ B.SC CYBER SECURITY

### COMPUTER APPLICATION

- ➔ MASTER OF COMPUTER APPLICATIONS
- ➔ BACHELOR OF COMPUTER APPLICATIONS

### DIPLOMA

- ➔ ELECTRICAL ENGINEERING
- ➔ ELECTRICAL & TELECOMMUNICATION ENGINEERING

157/F, Nilgunj Road, Panihati, Kolkata - 700 114, West Bengal | E: admission.gnit@jisgroup.org  
For further information call: 90736 83911 / 90733 22523 | W: www.gnit.ac.in

## DR. SUDHIR CHANDRA SUR INSTITUTE OF TECHNOLOGY & SPORTS COMPLEX (SURTECH)

### PROGRAMMES OFFERED

#### B.TECH

- ➔ COMPUTER SCIENCE & ENGINEERING
- ➔ COMPUTER SCIENCE & ENGINEERING (ARTIFICIAL INTELLIGENCE & MACHINE LEARNING)
- ➔ ELECTRONICS & COMMUNICATIONS ENGINEERING
- ➔ ELECTRICAL ENGINEERING
- ➔ CIVIL ENGINEERING
- ➔ MECHANICAL ENGINEERING
- ➔ AUTOMOBILE ENGINEERING
- ➔ COMPUTER SCIENCE & ENGINEERING (DATA SCIENCE)
- ➔ COMPUTER SCIENCE & ENGINEERING (CYBER SECURITY)
- ➔ ELECTRONICS & COMPUTER SCIENCE ENGINEERING

#### M.TECH

- ➔ ELECTRONICS & COMMUNICATION ENGINEERING
- ➔ MECHANICAL ENGINEERING
- ➔ STRUCTURAL ENGINEERING (CIVIL)

#### DIPLOMA

- ➔ CIVIL ENGINEERING
- ➔ AUTOMOBILE ENGINEERING

#### MANAGEMENT

- ➔ BBA

#### COMPUTER APPLICATION

- ➔ BCA

540, Dum Dum Road, Surermath (Near Dum Dum Jn. Station), Kolkata - 700 074, West Bengal  
E: admissions@dscc.ac.in | W: www.surtech.edu.in  
For further information call: 62919 77708 / 90733 22508

## GURU NANAK INSTITUTE OF PHARMACEUTICAL SCIENCE & TECHNOLOGY (GNIPST)

### PROGRAMMES OFFERED

#### M.PHARM

- ➔ PHARMACEUTICS
- ➔ PHARMACOLOGY
- ➔ PHARMACEUTICAL CHEMISTRY
- ➔ PHARMACEUTICAL QUALITY ASSURANCE
- ➔ REGULATORY AFFAIRS
- ➔ PHARMACEUTICAL BIOTECHNOLOGY
- ➔ PHARMACOGNOSY

#### B.PHARM

- ➔ MASTER OF COMPUTER APPLICATION
- ➔ BACHELOR OF COMPUTER APPLICATION

#### DIPLOMA

- ➔ CIVIL ENGINEERING
- ➔ ELECTRICAL ENGINEERING
- ➔ ELECTRONICS & COMMUNICATION
- ➔ MECHANICAL ENGINEERING

#### VOCATIONAL

- ➔ BVOC - GRAPHICS & MULTIMEDIA SOFTWARE DEVELOPMENT
- ➔ DVOC - ELECTRONIC MANUFACTURING SERVICES

#### M.Sc

- ➔ MICROBIOLOGY
- ➔ BIOTECHNOLOGY
- ➔ GENETICS
- ➔ MEDICAL LAB TECHNOLOGY

#### B.Sc

- ➔ MICROBIOLOGY
- ➔ BIOTECHNOLOGY
- ➔ GENETICS
- ➔ MEDICAL LAB TECHNOLOGY (BMLT)

#### MANAGEMENT

- ➔ BBA IN HOSPITAL MANAGEMENT (BHM)

#### D.PHARM

- ➔ BBA

## JIS SCHOOL OF POLYTECHNIC (JISSP)

### PROGRAMMES OFFERED

#### DIPLOMA

- ➔ CIVIL ENGINEERING
- ➔ MECHANICAL ENGINEERING
- ➔ ELECTRICAL ENGINEERING
- ➔ ELECTRONICS & TELECOMMUNICATION ENGINEERING
- ➔ COMPUTER SCIENCE AND TECHNOLOGY

Block A, Phase-III, Kalyani, Nadia - 741 235, West Bengal | E: admission.jissp@jisgroup.org  
W: www.jissp.ac.in | For further information call: 93309 06160

## GURU NANAK INSTITUTE OF HOTEL MANAGEMENT (GNIHM)

### PROGRAMMES OFFERED

- ➔ BA IN INTERNATIONAL HOSPITALITY AND TOURISM MANAGEMENT
- ➔ BACHELOR OF HOTEL MANAGEMENT & CATERING TECHNOLOGY
- ➔ B.SC IN HOSPITALITY & HOTEL ADMINISTRATION
- ➔ BA IN INTERNATIONAL CULINARY ARTS
- ➔ BA IN INTERNATIONAL HOSPITALITY & TOURISM MANAGEMENT
- ➔ BBA IN AVIATION MANAGEMENT
- ➔ MBA IN HOSPITALITY & HOTEL ADMINISTRATION
- ➔ DIPLOMA - HOTEL OPERATIONS I FOOD PRODUCTION & BAKERY I FOOD & BEVERAGE SERVICE I CRUISE SHIP MANAGEMENT

157/F, Nilgunj Road, Panihati, Kolkata - 700 114, W.B. E: admission.gnihm@jisgroup.org  
W: www.gnihm.ac.in | For further information call: 98361 06964 / 9330906150

## JIS INSTITUTE OF PHARMACY

### D.PHARM

Block A, Phase III, Kalyani, Nadia-741235, Wb(Near Kanchrapara / Kalyani Station)  
W: www.jisip.org | E:info.jip@jisgroup.org  
For further information call:93309 06162 | 86977 43363

## ASANSOL ENGINEERING COLLEGE (AEC) (JV)

### PROGRAMMES OFFERED

#### B.TECH

- ➔ ELECTRICAL ENGINEERING
- ➔ ELECTRONICS & COMMUNICATION ENGINEERING
- ➔ COMPUTER SCIENCE & ENGINEERING
- ➔ COMPUTER SCIENCE & TECHNOLOGY
- ➔ ELECTRONICS & COMPUTER SCIENCE
- ➔ MECHANICAL ENGINEERING
- ➔ INFORMATION TECHNOLOGY
- ➔ CIVIL ENGINEERING
- ➔ COMPUTER SCIENCE (AI & MACHINE LEARNING)
- ➔ COMPUTER SCIENCE & BUSINESS SYSTEMS (IN ASSOCIATION WITH TCS)
- ➔ COMPUTER SCIENCE ENGINEERING (IT & CYBER SECURITY INCLUDING BLOCK-CHAIN TECHNOLOGY)

#### M.TECH

- ➔ ELECTRONICS & COMMUNICATION ENGINEERING
- ➔ ELECTRICAL ENGINEERING

#### SCIENCE

- ➔ B.SC DATA SCIENCE

#### MANAGEMENT

- ➔ BACHELOR OF BUSINESS ADMINISTRATION
- ➔ BBA (HOSPITAL MANAGEMENT)

#### COMPUTER APPLICATION

- ➔ MASTER OF COMPUTER APPLICATIONS
- ➔ BACHELOR OF COMPUTER APPLICATIONS

Vivekananda Sarani, Kanyapur, Asansol, Burdwan - 713 305, West Bengal  
E: admission@aecwb.edu.in | W: www.aecwb.edu.in  
For further information call: 90736 83912 / 81001 92408

## GREATER KOLKATA COLLEGE OF ENGINEERING & MANAGEMENT (GKCEM) (JV)

### PROGRAMMES OFFERED

#### B.TECH

- ➔ ELECTRONICS & COMMUNICATION ENGINEERING
- ➔ COMPUTER SCIENCE & ENGINEERING
- ➔ ELECTRICAL ENGINEERING
- ➔ CIVIL ENGINEERING
- ➔ MECHANICAL ENGINEERING

#### DIPLOMA

- ➔ ELECTRICAL ENGINEERING
- ➔ ELECTRONICS & COMMUNICATION ENGINEERING
- ➔ COMPUTER SCIENCE & ENGINEERING
- ➔ CIVIL ENGINEERING
- ➔ MECHANICAL ENGINEERING

#### MANAGEMENT

- ➔ BBA

Dudhnai, Barupur (Near Phultala), 24 Pgs (S) - 743 387, W.B.  
E: admission.gkcem@jisgroup.org | W: www.gkcem.ac.in  
For further information call: 90736 83914 / 90736 83915

## DR. SUDHIR CHANDRA SUR INSTITUTE OF PHARMACEUTICAL SCIENCE AND TECHNOLOGY

### D.PHARM

540, Dum Dum Road, Surermath (Near Dum Dum Jn. Station), Kolkata - 700 074, West Bengal  
E: dsipst@jisgroup.org | W: www.dsipst.ac.in  
For further information call: 9433371907 | 9547726978

## ABACUS INSTITUTE OF ENGINEERING & MANAGEMENT (AIEM) (JV)

### PROGRAMMES OFFERED

#### B.TECH

- ➔ ELECTRONICS & COMMUNICATIONS ENGINEERING
- ➔ COMPUTER SCIENCE & ENGINEERING
- ➔ ELECTRICAL ENGINEERING
- ➔ CIVIL ENGINEERING
- ➔ MECHANICAL ENGINEERING

#### DIPLOMA

- ➔ COMPUTER SCIENCE & TECHNOLOGY
- ➔ MECHANICAL ENGINEERING
- ➔ CIVIL ENGINEERING
- ➔ ELECTRICAL ENGINEERING

#### COMPUTER APPLICATION

- ➔ BCA

VIII - Naturnagar, PO & PS- Mogra, Dist - Hooghly, Pin - 712 148, W.B.  
E: admission.aiem@jisgroup.org | W: www.abacusinstitute.org  
For further information call: 62919 77706 / 62919 77705

## GARGI MEMORIAL INSTITUTE OF TECHNOLOGY (GMIT) (JV)

### PROGRAMMES OFFERED

#### B.TECH

- ➔ CIVIL ENGINEERING
- ➔ COMPUTER SCIENCE & ENGINEERING
- ➔ ELECTRICAL ENGINEERING
- ➔ MECHANICAL ENGINEERING
- ➔ COMPUTER SCIENCE & BUSINESS SYSTEMS
- ➔ ELECTRONICS & COMMUNICATION ENGINEERING

#### MANAGEMENT

- ➔ BBA
- ➔ COMPUTER APPLICATION

#### BCA

Balarampur, Mouza Beralia, Barupur, Kolkata - 700 144  
W: www.gmitkolkata.org E: marketing\_gmit@jisgroup.org  
For further information call: 83369 42309 / 94757 46447

## GOLA POLYTECHNIC

### PROGRAMMES OFFERED

#### DIPLOMA

- ➔ MECHANICAL ENGINEERING
- ➔ MECHANICAL AUTOMOBILE ENGINEERING
- ➔ CIVIL ENGINEERING
- ➔ ELECTRICAL ENGINEERING
- ➔ ELECTRICAL & ELECTRONICS ENGINEERING

#### MANAGEMENT

- ➔ BBA
- ➔ COMPUTER APPLICATION

#### BCA

Polytechnic, Gola, Near Gola, Dist: Ramgarh, Jharkhand - 829110  
E: golapolytechnic@jisgroup.org | W: www.golapolytechnic.org  
For further information call: 70043 91176

## CHANDIL POLYTECHNIC

### PROGRAMMES OFFERED

#### DIPLOMA

- ➔ MECHANICAL ENGINEERING
- ➔ MECHANICAL AUTOMOBILE ENGINEERING
- ➔ CIVIL ENGINEERING
- ➔ ELECTRICAL ENGINEERING
- ➔ ELECTRICAL & ELECTRONICS ENGINEERING
- ➔ COMPUTER SCIENCE & ENGINEERING

#### MANAGEMENT

- ➔ BBA
- ➔ COMPUTER APPLICATION

#### BCA

Chandil Dam Road, Dist: Seraila - Kharsawan, Jharkhand - 832401  
E: jiscd@jisgroup.org | W: www.chandilpolytechnic.org  
For further information call: 9470146439 / 9122497058 / 79790 41670

## JIS INSTITUTE OF SKILL DEVELOPMENT (JISD)

### PROGRAMMES OFFERED

#### CERTIFICATE COURSES

- ➔ TOURISM & HOSPITALITY
- ➔ HEALTHCARE
- ➔ AUTOMOTIVE
- ➔ IT & ITES
- ➔ RETAIL
- ➔ TELECOM

- ➔ BEAUTY & WELLNESS
- ➔ WATER MANAGEMENT & PLUMBING
- ➔ APPAREL
- ➔ LOGISTICS
- ➔ SECURITY

56 Jessore Road, Near Patipukur Bus Stop, Kolkata - 700 048  
E: jisid@jisgroup.org | W: www.jisid.in  
For further information call: 70444 14004

## SHREE NARAYAN MEDICAL INSTITUTE & HOSPITAL

### PROGRAMMES OFFERED

#### COURSES

- ➔ MBBS
- ➔ GNM-NURSING

#### PARAMEDICAL COURSES

- ➔ DIPLOMA IN OPHTHALMIC ASSISTANT
- ➔ DIPLOMA IN MEDICAL RADIOGRAPHY
- ➔ DIPLOMA IN MEDICAL LABORATORY TECHNICIAN
- ➔ DIPLOMA IN ECO TECHNICIAN
- ➔ DIPLOMA IN SANITARY INSPECTOR
- ➔ DIPLOMA IN OPERATION THEATRE ASSISTANT
- ➔ CERTIFICATE IN MEDICAL DRESSER

Mahavir Nagar, Near NH-107, Bheradhar, Saharsa, Bihar-852201 | E: snfshaharsa@snmh.in  
W: www.snmh.in | For further information call: 06478-2999985 / 930837610

## LORD BUDDHA KOSHI MEDICAL COLLEGE & HOSPITAL

### COURSES

- ➔ M.B.B.S | POST GRADUATE (MD/MS) | D. PHARM | B. PHARM

## JIS SCHOOL OF MEDICAL SCIENCE & RESEARCH

### COURSES

- ➔ M.B.B.S

51 South Nayabaz, G.L.P Colony, Domjur, Howrah, WB-71112 | E: info@jisrmar.org | W: www.jisrmar.org  
For further information call: 81007 49669

## GURU NANAK INSTITUTE OF DENTAL SCIENCES & RESEARCH

### PROGRAMMES OFFERED

#### MDS

- ➔ PROSTHODONTICS AND CROWN & BRIDGE | ORTHODONTICS AND DENTOFACIAL ORTHOPAEDICS | PERIODONTOLOGY | CONSERVATIVE DENTISTRY & ENDODONTICS | ORAL & MAXILLOFACIAL SURGERY | ORAL AND MAXILLOFACIAL PATHOLOGY & MICROBIOLOGY | PEDODONTICS AND PREVENTIVE DENTISTRY | ORAL MEDICINE & RADIOLOGY | PUBLIC HEALTH DENTISTRY

#### BDS

- ➔ B.D.S

## JIS INSTITUTE OF ADVANCED STUDIES & RESEARCH (JISIAR), JIS UNIVERSITY

### CENTRE FOR DATA SCIENCE (CDS)

- ➔ MTECH COMPUTER SCIENCE & ENGINEERING [SPECIALIZATION IN DATA SCIENCE] (2 YEARS)
- ➔ MTECH IN DATA SCIENCE & AI (2 YEARS- BLENDED MODE FOR WORKING PROFESSIONALS)
- ➔ M.Sc IN COMPUTER SCIENCE (2 YEARS)
- ➔ SPECIALIZATION : GENERATIVE AI & NLP | ML-AUGMENTED CYBERSECURITY | AI IN HEALTHCARE
- ➔ PHD IN DATA SCIENCE & APPLICATIONS
- ➔ AI AND MACHINE LEARNING | MEDICAL IMAGE PROCESSING | BUSINESS ANALYTICS | CYBERSECURITY | NATURAL LANGUAGE PROCESSING | BLOCKCHAIN | IOT | SATELLITE IMAGE PROCESSING | CRYOSPHERIC SCIENCE

### CENTRE FOR HEALTH SCIENCE & TECHNOLOGY

- ➔ M.Sc IN MEDICAL BIOTECHNOLOGY AND BIOIN